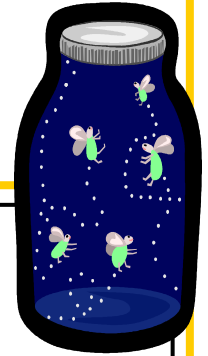
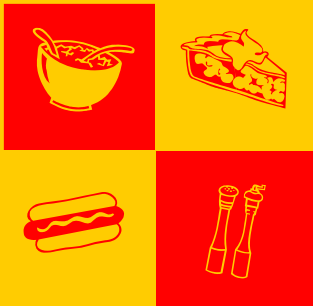


CITY OF WOODLAND



Updates to the Zoning Ordinance

The City Council, from time to time, amends the City's zoning ordinances to stay current with building demands and environmental regulatory agencies.

The Council is in the process of amending the zoning ordinance regarding the allowable impervious cover and the process the property owner must follow to exceed the allowable permitted impervious cover.

Currently a special use permit is necessary to exceed the maximum permitted impervious

cover. The changes will require variance approval to exceed the allowable coverage limits. Property owners would need to demonstrate a hardship preventing the reasonable use of their property.

This standard would be required on property greater than 16,500 square feet in area.

Zoning ordinances are posted on the City Website and copies are available at the City Hall.

Questions: Call City Hall at 952-474-4755

Annual Septic Review

The Septic Inspector, Kurt Larsen, will be conducting a visual review of 1/2 the septic systems in Woodland between July 9-12.

Kurt is looking at the septic systems, per city ordinance, for any signs of a leaking onto the surface and to determine if the system needs to be pumped.

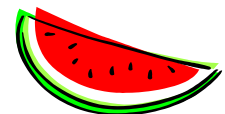
If you have any questions, please call Shelley at the City Hall at 952-474-4755.



Fireflies are not really "flies", but are beetles in the family Lampyridae. "Flies" have one pair of wings (like houseflies) while all other winged insects have two pairs of wings, or, four wings altogether.

Inside this issue:

Traffic Control	2
Recycling	2
Think outside the bag	3
Happenings around town	4
Hook, Line & Sinker	4
Ash Beetles	5



Recreational Fires

Recreational fires are permitted in Woodland without a permit. There are guidelines to having recreational fires and these must be followed.

- The fire must be kept a minimum of 25 feet from any structure
- Fires must be in a non-combustible fire ring or container
- The firewood must be no larger than 36

inches around and 24 inches high (3x2)

- The fire must be attended to at all times and a fire extinguisher or garden hose connected to a water supply available to use.
- You assume all responsibility by having a recreational fire.

If for any reason the fire department responds to a fire related call regarding your recreational fire, even though it may be an unintentional call from a well-meaning neighbor who sees smoke, the homeowner having the recreational fire will be responsible for the fire call charges. \$250 for the first call, \$500 for the second call.

Woodland City Council

Mayor

Jean Stark

Councilmembers

Jim Doak

Mark Evenstad

Mike Jilek

Tom Newberry

All contact information can be found on the website

www.cityofwoodlandmn.org

City Hall # 952-474-4755

Traffic Speeds in Woodland

We have heard from many residents expressing concern with the traffic and speeds along Breezy Point Road and Maplewood Road. We have received feedback from some residents that would like speed bumps and others who would like additional stop signs.

The City Council has been discussing this issue for several months. The police have increased traffic monitoring along these corridors. We are finding that many of the drivers violating the speed limits are residents of Woodland.

Council has considered adding white

fog lines along these roadways. However, the City Engineer has advised against the white fog lines because our roads are narrow. Speed bumps can create a liability and stop signs are only to be used at intersections. Council agreed not to use these options to slow traffic.

We are aware of the increase in the volume of traffic through Woodland with the construction along County Highway 101 and Minnetonka Blvd. We have asked the police to increase traffic enforcement and monitoring of Breezy Point Road and Maplewood Road during this time.

Street Repairs

Several streets will be seal coated this summer. Those streets include:

- Blaine Avenue
- Gale Road
- Maple Hill Road
- Spirit Knob Road

We anticipate this work to be completed in July. Roads may be slippery following the placement of the chip rock. Loose rock will be swept up about a week after the initial application.

Thank you in advance for your patience and cooperation during this maintenance work. Drive carefully!

Parking on City Streets

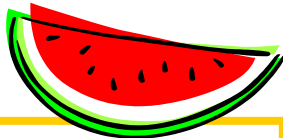
Planning a summer party? Woodland has limited designated parking zones, which require a permit from the City before use.

The permit may be obtained through the Clerk's Department at City Hall. The parking permit is \$5 per day. The Police Department will ticket vehicles that are improperly parked or parked without a permit.

Please check with the City for parking restrictions. Don't forget to remind your lawn service providers or con-

struction/service trucks of the parking restrictions.

Reserving designated parking locations is done on a first-come basis.



By the 10th century AD, watermelons were being cultivated in China, which today remains the world's single largest watermelon producer.

A one-cup serving of watermelon will provide 48 calories.

Watermelon is an excellent source of vitamin C and A.

Recycling

Waste Management collects recycling bi-weekly in Woodland on Thursdays.

Please be sure to have your cart out and available for the driver by 7:00 AM on the pick-up day.

PICK-UP DAYS

- Friday -July 6 (one day later due to holiday)
- Thursday -July 19
- Thursday -August 2
- Thursday -August 16
- Thursday - August 30
- Thursday -September 13
- Thursday - September 27

No need to separate products—the following products can be tossed into the green cart.

Glass jars and bottles, newsprint, magazines, miscellaneous paper, junk mail, aluminum and metal cans, plastic bottles with a neck, cardboard and box board.

PAPER GUIDE

- YES:** mail, office and school papers
magazines and catalogs, newspapers and inserts
phone books, cardboard boxes
cereal, cracker, pasta and cake mix boxes
shoe boxes, gift boxes and electronic boxes
boxes from toothpaste, medications and other toiletries
- NO:** pizza boxes, egg cartons and boxes soiled with food
boxes from refrigerated or frozen foods
milk cartons and juice boxes
paper towels, napkins, cups and plates & gift wrap

If the product is stored in the cupboard it is recyclable, if it goes in the fridge or freezer or microwave, it is not recyclable.

"I went to the store. I bought a wastebasket. The cashier put it in a bag. I brought it home. I took it out of the bag. I crumpled up the bag and tossed it in the wastebasket." Lily Tomlin

Think Outside The Bag

The debate over whether plastic or paper bags are better for the environment has a long history and is often rekindled each time we check out at the grocery store when we hear that familiar question: Paper or plastic?

There seems to be pluses and minuses on both sides of the debate. For paper bags, the life cycle stages consist of timber harvesting, pulping, paper and bag making, product use and waste disposal. For plastic (polyethylene) bags, the steps involve petroleum or natural gas extraction, ethylene manufacture, ethylene polymerization, bag processing, product use and waste disposal. In all of these steps, energy is required and wastes are generated.

- Plastic bags were first introduced in 1977 and now account for four out of every five bags handed out at grocery stores.
- Paper sacks generate more air and more water pollutants than plastic bags.
- Paper bags are made from trees, which are a renewable resource. Most plastic bags are made from polyethylene, which is made from crude oil and natural gas, nonrenewable resources.
- 2000 plastic bags weigh 30 pounds, 2000 paper bags weigh 280 pounds. The latter takes up a lot more landfill space.
- It takes 91 percent less energy to recycle a pound of plastic than it takes to recycle a pound of paper. It takes more than four times as much energy to manufacture a paper bag as it does to manufacture a plastic bag. Energy to produce the bags (in British thermal units): Safeway plastic bags: 594 BTU; Safeway paper bags: 2511 BTU.
- Paper is accepted in most recycling programs while the recycling rate for plastic bags is very low. Research from 2000 shows 20 percent of paper bags were recycled, while one percent of plastic bags were recycled.

Current research demonstrates that paper in today's landfills does not degrade or break down at a substantially faster rate than plastic does. In fact, nothing completely degrades in modern landfills due to the lack of water, light,

oxygen, and other important elements that are necessary for the degradation process to be completed.

- According to *The Wall Street Journal*, the U.S. goes through 100 billion plastic shopping bags annually. An estimated 12 million barrels of oil is required to make that many plastic bags.
- Plastic bags that end up in the oceans cause death to sea turtle and other marine animals every year when animals mistake them for food.

Q: "So would you like paper or plastic?"

A: "Neither BECAUSE..."

1. Both use up valuable natural resources for a single-use, disposable product
2. Both have negative impacts on wildlife and pollute our environment
3. Both create significant toxic by-products during their lifecycles
4. Neither is effectively recycled

At the end of the day using reusable bags and containers are the real answer!

What Can I Do?

1. Reuseable bags are available at many stores or on line by searching websites for [reuseable bags](#).
2. Bring your bags back to the store for reuse.
3. Recycle used bags at participating stores.
4. If you do not need a bag, do not take one.

Sources: [epa.gov](#), [greenfeet.net](#), [reusablebags.com](#), [Wall street Journal](#), and [greenguardian.com](#),

Where to Recycle Plastic Bags

Clean, dry, empty shopping bags can be recycled at the following metro area grocery stores:

- Cub Foods
- Lund's
- Byerly's
- Kowalski's

Bags are also accepted at Hennepin County Recycling Centers in Brooklyn Park and Bloomington.

Visit www.itsinthebagmn.org for a complete list of drop-off locations.

Plastic bags cannot be placed in the Waste Management green recycling carts at this time. However, the next time you head to the grocery store take a bag full of plastic bags to drop off at one of the many participating grocery stores' recycling containers.

Happenings Around Town

Minneapolis Aquatennial

July 13-22 www.aquatennial.org

State Fair August 23 - Sept. 3

www.mnstatefair.org

Minnesota Renaissance Festival

August 18 - September 30

James J Hill Days — Wayzata

September 8-9

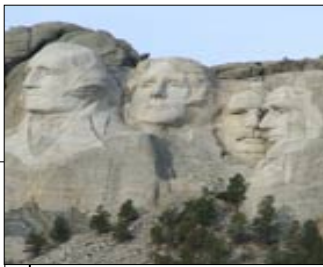
The 2008 U.S. Women's Open will be held at the Interlachen Country Club in Edina, MN. June 23-29, 2008. Ticket are on sale now.

www.2008uswomensopen.com

Hook, Line and Sinker

Lead is a toxic metal that, in sufficient quantities, has adverse effects on the nervous and reproductive systems of mammals and birds. Found in most fishing jigs and sinkers, this metal is poisoning wildlife such as loons and eagles.

When lead fishing sinkers are lost through broken line or other means, birds can inadvertently eat them. Water birds like loons and swans often swallow lead when they scoop up pebbles from the bottom of a lake or river to help grind their food. Eagles ingest lead by eating fish which have themselves swallowed sinkers.



Approximately 400 men and women worked at Mount Rushmore during the carving process from October 1927 to October 1941. Throughout this extremely dangerous work there were no lives lost. 90% of the mountain was carved using dynamite

WHY THESE FOUR PRESIDENTS?

George Washington, (1st president) led the early colonists in the American Revolutionary War to win independence from Great Britain. He was the father of the new country and laid the foundation of American democracy. Because of his importance, Washington is the most prominent figure on the mountain. (1732-1799)

Thomas Jefferson, (3rd president) he was the author of the Declaration of Independence, a document which inspires democracies around the world. He also purchased the Louisiana Territory from France in 1803 which doubled the size of our country, adding all or part of fifteen present-day states. (1743-1826)

Theodore Roosevelt, (26th president) provided leadership when America experienced rapid economic growth as it entered the 20th Century. He was instrumental in negotiating the construction of the Panama Canal, linking the east and the west. He was known as the "trust buster" for his work to end large corporate monopolies and ensure the rights of the common working man. (1858-1919)

Abraham Lincoln, (16th president) held the nation together during its greatest trial, the Civil War. Lincoln believed his most sacred duty was the preservation of the union. It was his firm conviction that slavery must be abolished. (1809-1865).

Tips for Anglers to help safeguard wildlife and human health

► Use non-lead fishing weights. Inexpensive and ecologically sound alternatives to lead fishing weights are available. Anglers should use sinkers and jigs made from non-hazardous materials such as steel, tin and bismuth.

► Never throw old fishing gear into the water or shore. Discard old lead sinkers and jigs properly. For example, you may want to bring them to your local household hazardous waste collection site during your next visit.

► Never put a lead sinker in your mouth or bite down on slip shot—use a pair of pliers instead!

► Always wash you hands thoroughly after handling lead sinkers or cleaning out your tackle box.

More information:

www.moea.state.mn.us/sinkers

www.dnr.state.mn.us

Hazardous Product Drop-off

Hennepin County Drop-off Facilities

- 8100 Jefferson Hwy in Brooklyn Park
- 1400 96th Street in Bloomington

Items Accepted: household cleaners, pesticides, poisons, mercury containing items, paint, automotive fluids.

TVs, VCRs, computers, phones, batteries, fluorescent lamps, Appliances (fee), auto tires (fee)

Open: Tue., Wed. & Thur. 10am-6pm

Wed. 10am-8pm & Sat. 8am-5pm

Questions: Call 612-348-3777 www.hennepin.us

June 2007
Gettysburg, Pennsylvania -
A diamond-adorned sword once
owned by General Ulysses Grant was
sold for more than
\$1,6-million in an auction of
Civil War items.

The sword was given to Grant, who
later became the 18th president.

Are You Fertilizing More Than Your Grass

Everyone lives in a watershed.

The choices we make in caring for our lawns directly affect water quality.

The common cause of lake and river pollution is phosphorus runoff. Phosphorous turns lakes and rivers green by stimulating the growth of algae in the lakes and rivers. This crowds out the other water plants and reduces oxygen for fish. The result is unattractive, foul-smelling water that is bad for fish, wildlife and humans.

Water knows no political boundaries. Woodland is part of the Minnehaha Watershed District which covers 181 square miles in Hennepin and Carver County. The natural drainage system eventually flows to the Mississippi

River. The watershed district contains



40 lakes including Lake Minnetonka.

Whatever washes off your yard or the streets and impervious surfaces runs directly or indirectly into several water bodies. That includes lawn fertilizers, grass clippings, pet waste, tree leaves and seeds—all sources of phospho-

rous, the plant and nutrient turns lakes and rivers green with algae.

- Keep soils from washing into the street or lake.
- Choose zero-phosphorous fertilizers. The majority of Twin Cities' lawns are naturally high in phosphorous and will remain healthy without adding more.
- If you think your lawn needs phosphorous, test your soil first. For information call INFO-U at 612-624-2200 message 468 or visit www.extension.umn.edu
- Soil test kits from U of M lab \$15 / sample—call 612-625-3101
- Clean up after pets

Deephaven Triathlon

Saturday, August 11, 2007

The race consists of a 200 yard swim, 3.67 mile bike race and 2 mile run. Registration begins at Deephaven Beach at 9:30am.

The Triathlon ends at Thorpe Park.

Pre-registration is strongly encouraged. \$15 for singles & \$35 for family participants.

Applications available at City Hall or on the Deephaven Website.

www.cityofdeephaven.org

952-474-4755

Comprehensive Plan Updates

Once every ten years, jurisdictions in the seven county metropolitan area update their Comprehensive Plans. This is a requirement of the state to ensure proper and coordinated planning occurs at both regional and community levels. A Comprehensive Plan is essentially a statement of vision and policy that looks forward ten or more years to help guide decisions that make a community a better place to live, work and play.

The Comprehensive Plan is the guiding policy for Woodland upon which all decisions need to be based.

The Council will be reviewing the current Comprehensive Plan to consider making changes and updates during the August and September Council Meetings. A copy of the current plan is available on the website or at the City Hall.

Tracking the Emerald Ash Borer

It has not yet been detected in Minnesota, but state foresters are on the lookout for early signs of the Emerald Ash Borer, an exotic beetle that has already killed more than 20 million ash trees in Michigan, Indiana and Ohio.

The Minnesota Department of Agriculture is "girdling" ash trees throughout the state, then monitoring those trees for signs of the Emerald Ash Borer. Girdling—removing a band of bark from around the trunk of the tree—interferes with the tree's ability to transport nutrients and stresses the tree throughout the growing season. Emerald Ash Borers are more likely to infest stressed ash trees than healthy ones—so the girdled trees become a kind of trap for the beetles.

Emerald ash borer (EAB), is an exotic beetle that was discovered in southeastern Michigan near Detroit in the summer of 2002. The adult beetles nibble on ash foliage but cause little damage. The larvae (the immature stage) feed on the inner bark of ash trees, disrupting the tree's ability to transport water and nutrients. Emerald ash borer probably arrived in the United States on solid wood packing material carried in cargo ships or airplanes originating in its native Asia. Emerald ash borer is also established in Windsor, Ontario, was found in Ohio in 2003, northern Indiana in 2004, and northern Illinois in 2006. More Information: www.emeraldashborer.info



The Lone Ranger's trademark was the black mask he wore to hide his face. The material used to make the mask came from a vest worn by Captain Dan Reid, who happened to be the Lone Ranger's slain brother.

To bee or not to bee

And you thought your job was tough.... Bee's have a very dangerous occupation with high mortality rates, just visiting flowers and collecting pollen. Many bugs and spiders hide in flowers to capture unwary bees. Others are lost to birds in flight. Insecticides used on blooming plants can kill large numbers of bees, both by direct poisoning and by contamination of their food supply.



Fire Protection Service The City of Woodland has a contract with the City of Wayzata for fire protection services. Woodland pays a portion of the Fire Department budget based on the volume of calls. The City believes the most fair and equitable way to cover the cost of fire protection service is to charge back the residence where the fire call originated. Residents are responsible for all costs related to fire calls to their residence whether the call is a false alarm or real fire.

Often, the fire alarm is canceled immediately and prior to the fire trucks arriving at the residence, or even leaving the station. The Wayzata Fire Firefighters are paged instantaneously and they respond, leaving their homes or jobs. The volunteers are paid for responding, even if the call is canceled.

The City of Woodland adopted a fee to assess fire calls to the property where the call originated. The first call is \$250. The second call and all additional calls will be \$500 in a calendar year.



KEEP PETS SAFE IN SUMMER HEAT

- **Never** leave your pet in a car when you travel or do errands. During warm weather, the inside of your car can reach 120° in a matter of minutes, even if you're parked in the shade.
- Dogs and cats can't perspire and can only dispel heat by panting and through the pads of their feet. Pets left in hot cars even briefly, can suffer from heat exhaustion, heat stroke, brain damage, and can even die. To avoid any chance that your pet will succumb to the heat of a car this summer, leave your pet at home while you're on the road.
- Pets need exercise even when it is hot, but extra care needs to be taken with older dogs, short-nosed dogs, and those with thick coats. On very hot days, limit exercise to early morning or evening hours. Keep in mind that asphalt gets very hot and can burn your pet's paws. His or her body can heat up quickly, and sensitive paw pads can burn.
- Be especially sensitive to older and overweight animals in hot weather. Brachycephalic or snub-nosed dogs such as bulldogs, pugs, Boston terriers, Lhasa apsos and shih tzus, as well as those with heart or lung diseases, should be kept cool in air-conditioned rooms as much as possible.
- When walking your dog, steer

clear of areas that you suspect have been sprayed with insecticides or other chemicals.

- Be alert for coolant or other automotive fluid leaking from your vehicle. Animals are attracted to the sweet taste, and ingesting just a small amount can be fatal. Call your veterinarian if you suspect that your animal has been poisoned.
- Do not apply any sunscreen or insect repellent product to your pet that is not labeled specifically for use on animals. Ingestion of sunscreen products can result in drooling, diarrhea, excessive thirst and lethargy. The misuse of insect repellent that contains DEET can lead to neurological problems.
- Having a backyard barbecue? Always keep matches, lighter fluid, citronella candles and insect coils out of pets' reach.
- Stay alert for signs of overheating in pets, which include excessive panting and drooling and mild weakness, along with an elevated body temperature.

If you will be walking with your pet, remember that while paw pads are "tough" they are also sensitive, and can be burned while walking on hot pavement and tar. Asphalt and concrete can heat up quickly and a pet walking, sitting or standing on pavement can get exposed to very hot

temperatures. If possible, walk on grass or dirt, and check your pet's paw pads to make sure there isn't any redness or pain. Imagine walking on the pavement barefoot. Too hot for you is likely too hot for your pet.

If your pet is exposed to high temperatures:

- Be alert for signs of heat stress-heavy panting, glazed eyes, a rapid pulse, unsteadiness, a staggering gait, vomiting, or a deep red or purple tongue.
- If your pet becomes overheated, you must lower her body temperature immediately.
- Move your pet into the shade and apply cool (not cold) water over their body to gradually lower her temperature.
- Apply cool towels to your pet's head, neck, and chest only.
- Let your pet drink small amounts of cool water or lick ice cubes.
- Take your pet directly to a veterinarian-it could save her life.

A general rule is, if it's too hot outside for you, it's too hot outside for your pet.

These tips are provided by the Humane Society of the United States and can be found on their Web site at <http://www.hsus.org>.