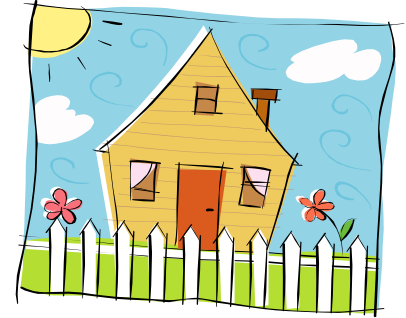


City of Woodland

20225 Cottagewood Road, Deephaven, MN 55331

www.cityofwoodlandmn.org

Board of Review Meeting Scheduled April 9, 2007 at 7:00PM



Residents will be receiving property tax statements in the mail.

Your property tax is determined by three factors: the amount of money spent by local taxing jurisdictions, the taxable market value of your property and the property class.

The Assessor's job is to estimate, as accurately as possible, the market value of your property. Market value is defined as the most probable price that a well informed buyer would pay a seller without either party being unduly forced to buy or sell. The best indicator of market value is market activity. The best evidence of market values is sale price—the

sale price of the subject property or of similar properties.

The burden of proving that the assessment on the property is excessive is upon the taxpayer.

Board of Review Meeting scheduled for Monday, April 9, at 7:00PM

The Board of Review will address objections to the property class and/or the market value. The Board's powers are limited to correcting the property class and/or the market value.

Steps to Appeal Your Property Value

What should you do if you believe your property's estimated market value is higher than what the property would likely sell for?

Step 1 You should first collect information about similar properties that have recently sold. If this information indicates that your value is incorrect, you should contact the City Assessor, Dan Distel at the City Hall 952-474-4755 or Home Office 952-361-0566 to discuss this information.

Step 2 If, after discussing this information with the assessor, you still feel you have good comparable sales and information to support an appeal, you should complete and return a Board of Review application to the City Hall.

Step 3 Attend the Board of Review meeting on Monday, April 9 at 7:00pm at the City Hall. The owner is responsible for presenting evidence to the Board as to why the market value determined by the assessor is not fair and equitable.

Inside this issue:

<i>Water Test Kits</i>	2
<i>Dutch Elm Disease</i>	5
<i>New Deer Signage For the State of MN</i>	5
<i>Parking on City Streets</i>	6
<i>Keeping the Lakes Clean</i>	6
<i>Happenings Around Town</i>	7
<i>Recycling Dates & Street Sweeping</i>	8

Load Limit Restrictions in Effect March 1- April 30

Weight restrictions for all Woodland roads are in effect from March 1 through April 30. All road are restricted to 4 tons per axel. No waivers will be issued during this time.

The City strongly enforces weight restrictions to prevent damage to the city streets.

Residents are responsible for informing their service providers of the weight restrictions in the area. This is important when contracting moving vans, delivery trucks or construction vehicles. Questions call City Hall 952-474-4755.

Well Water Test Kits

The City will order water test kits and distribute them to residents that have requested a kit by completing the form below.

The basic kit is \$20 to test for coliform bacteria and nitrate. A kit is also available for an additional \$16 to test for lead.

Kits can be ordered through City Hall until April 27. Residents will need to draw their own water sample.

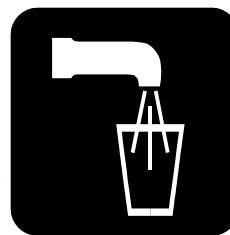
The water samples can be dropped off at the City Hall on

Monday, May 21 and city staff will deliver the water samples to the testing lab in Minneapolis.

The water sample must be tested within 30 hours of drawing the sample.

If the scheduled drop-off date is not convenient, residents can draw a water sample at their convenience and mail the water sample directly to the lab.

Residents will be given a report of the findings.



If you would like the City to deliver your water sample to the lab, we recommended that the sample be drawn first

thing Monday morning, May 21 and dropped off at City Hall by noon that same day.

Easy to follow instructions are provided with each kit.

Please call Shelley at City Hall if you would like more information.

952-474-4755

As recommended by the MN Health Department and on review by Woodland's Medical Officer, Bruce Shilling, MD the following recommendations for examination for the homeowners individual water supply are as follows:

- 1) Examination for coliform bacteria and nitrate compounds, which indicate contamination by human and animal wastes, or commercial fertilizer from the surface of the ground or nearby septic systems, be conducted every 2-5 years.
- 2) Determination of elemental lead levels, generally disseminated from the homeowners plumbing system, be carried out after the plumbing system is well established or completion of major changes, eg. change of a water heater or faucets, be conducted every 10-12 years.

For information on safe drinking water standards: www.health.state.mn.us Phone: 651-201-4600

City of Woodland Order Form for Water Test Kit

Name _____

Address _____

Phone # _____

Please check the kit(s) you wish to order

Basic Test Kit _____ \$ 20.00Tests for Coliform Bacteria and Nitrates

Lead Test Kit _____ \$ 16.00Tests for lead only

Total Due \$ _____

Make Check payable to: City of Woodland

Mail to: 20225 Cottagewood Road
Deephaven, MN 55331

Residents will need to draw their own water sample. Water samples must be tested within 30 hours after drawing the sample. Directions will be included with the kit.



Dutch Elm Disease

The City of Woodland will be working with a tree inspector this year

to identify diseased elm trees and oak wilt.

The goal is to slow the spread of the disease of Dutch elm disease and oak wilt through removal of infected trees.

If left standing, an infected elm of average size—10 to 20 inches in diameter—will become a breeding site capable of produc-

ing tens of thousands of new beetles. Each beetle carries the Dutch elm disease fungus on its body and can fly more than a mile to feed on another elm, thereby transmitting the fungus.

The City of Woodland's "urban forest" exists as a single system regardless of property lines. Protecting the health of our "forest" requires cooperation between residents who manage their private property. Residents are not expected to be experts on tree disease, which is why the City will have a forestry and natural resource professional assess trees throughout Woodland this year.

If diseases trees are found, property owners will be notified by the City and homeowners will be required to remove the diseased trees.

It is important to remove diseased trees promptly because delays increase the chance of beetle production and disease spread. Many of the Lake Minnetonka communities are well underway with a Dutch elm program of detection and removal.

Woodland's tree inspector will survey neighborhoods for disease trees later this year. We will keep you posted on when this inspection will start.

Improved Deer Signage Being Tested Throughout Minnesota

You are driving down a road and suddenly a deer sprints from the woods and collides with the hood of your car.

What if this scenario could be prevented? The MN Department of Transportation continues to explore ways to reduce the number of deer-related crashes occurring on Minnesota roads and highways.

Currently there are 500 standard deer signs in the state and because there are so many deer signs, drivers tend to ignore them. In 2001 MN/Dot tested motion-activated technology. When triggered, a beacon flashed a warning to drivers. However, because so many deer crossed the road each day, the beacon's batteries would die in a short period of time. In 2006 MN/DOT began another round of testing. Changes were made in

order to increase effectiveness. The beacon will now use LED lighting which takes less power. Solar power will only be used to recharge the beacon's batteries each day. The beacons will hold a charge for up to 150 deer crossings per day.

About 20 to 50 feet away from the side of the road, a series of infrared detectors sets up a beam from detector to detector. When a deer breaks the beam, it sends a message to the beacon, and the beacon will flash to warn drivers. The tests will be conducted from December 2006 to November 2007 and if successful, the inexpensive,

easy-to-deploy system may be implemented throughout the state.

Keeping the Lakes Clean

Rainwater runoff can be a major source of pollutants. The problem with stormwater runoff is that we do not always see its effect. Although the impact is easy to see on bare, exposed soil, it is less visible on a well-maintained lawn. And yet lawn runoff can be a major source of pollutants to a lake. How can that be? Nonpoint source pollution, as it is called, is an accumulation of many individual sources of pollution on a site: soil particles, pet wastes, oil, dissolved metals, pesticides, excess fertilizer and herbicides. Everything in that lawn, as well as on the streets and driveways, is carried by stormwater runoff.

Turf is not a good filter for stormwater runoff. Grass roots are shallower than the roots of native vegetation. The deeper roots of native vegetation help to hold soil particles in place and enhance aeration and infiltration.

Runoff often contains phosphorous, a plant nutrient, which can increase algae growth, and in turn lower water clarity. Just 2 pounds of phosphorus can produce 100 pounds of algae. And although runoff from lawn-to-lake lakeshore sites varies considerably, on average a lawn-to-lake lot produces 2 pounds of phosphorous per summer compared to 0.03 pound per summer for a natural shoreland lot.

Minnesota soils are often phosphorus rich. So even an unfertilized lakeshore lawn allows seven to nine times more phosphorus to enter a lake than a naturally vegetated shoreline.

Shoreline buffers can help minimize impacts associated with the lawn-to-lake style. These corridors of natural vegetation along rivers and lakes help protect water quality. A shoreline buffer of natural vegetation traps, filters, and impedes runoff. Buffers stabilize banks of lakes and rivers, offer scenic screening of shoreland development, reduce erosion, and control sedimentation.

Here are some ways we can all make a difference at home, at the cabin or if we own a business: Simple changes make big differences

- Keep pesticides, oil, leaves and other pollutants off streets and out of storm drains.
- Clean up pet waste – bury it or flush it down the toilet.
- A simple start to managing rainwater is to redirect gutter downspouts that run onto impervious surfaces, such as driveways, patios and sidewalks so they run onto vegetated areas where they can safely soak in.

Postage Rate Increasing

May 14, 2007 the First-Class Stamp (one-ounce letter rate) will go up to **41-cent**.

Memorial Day Observed

Monday, May 28.

City Hall will be closed

Mothers Day

Sunday, May 13

Father's Day

Sunday, June 17

Parking On City Streets

Woodland has limited designated parking zones, which require a permit from the City before use. The permit may be obtained through the Clerk's Department at City Hall. The parking permit is \$5 per day.

The Police Department will ticket vehicles that are improperly parked or parked without a permit. Please check with the City for parking restrictions. Don't forget to remind your lawn/snow service providers or construction trucks of the parking restrictions.

No Parking on City Streets, except designated parking zones with permit only.

Recycling Paper Products

Helpful tip for Food Box Recycling

If the product is stored in the cupboard - the box is recyclable.

If it goes in the fridge, freezer or microwave - it isn't.

Use less energy Production of recycled paper uses 80 percent less water, 65 percent less energy and produces 95 percent less air pollution than paper production using raw materials .

Reduce greenhouse gas emissions In 2003, recycling in Minnesota reduced greenhouse gas emissions equal to taking 2.3 million cars off the road.

Save natural resources Recycling one ton of paper saves 7,000 gallons of water.

Create jobs Over 19,000 jobs in Minnesota are involved in recycling. Recycling creates four jobs for every one job created in the waste management and disposal industries.

Happenings Around Town

The Wayzata Historical Society

will host an event and guest speaker

April 12, 2007 at 7:00PM

Wayzata City Hall—Community Room

Notorious Crimes in and around Wayzata.
The grisly murder of stock broker M. Prozumenshikov.

The speaker will be noted criminal defense attorney, Joe Friedberg, Esq. Mr. Friedberg defended Zachary Persitz, the accused murderer.

More information: 952-473-3631 or
www.wayzatahistoricalsociety.org

Explore Minnesota State Parks

www.stayatmnparks.com

Or by calling toll free 1-866-85PARKS

There are 72 parks scattered across the state covering more than 260,00 acres with over 5,000 campsites for you to enjoy.

Reserve your spring / summer camping site on line up to 90 days in advance.

A number of campsites are available on a first-come, first-served basis

Camping reservations are not needed from November 1 - April 1



The Minnesota Landscape Arboretum

www.arboretum.umn.edu

General Information #952-443-1400.

Tour the Arboretum's 12.5 miles of garden paths and trails. Walk, bike, or drive *Three-Mile Drive* to see more gardens and collections.

In May, thousands of visitors come to see each year's new spring bulb display and the spectacular show of 400 crabapple trees in blossom on *Three-Mile Drive*.

Located about 4 miles west of Chanhassen on State Hwy. 5, just one quarter-mile west of the intersection of State Hwy. 5 and State Hwy. 41

Classic Auto Show

The 35th annual car show is the second largest outdoor show in the nation and boasts more than 10,000 street rods, customs, classics and restored vehicles, all dating from 1964 and earlier.

MN State Fairgrounds
St Paul, MN 55108-3099
(952) 278-3140

Website: www.msra.com

Rates: Adults \$10, kids 12 and under are free with each paid adult.

Dates: June 22, 2007 to June 24, 2007

Chanhassen Dinner Theater

Easter Parade — Playing through June 9!



Called, "the happiest musical ever made," Irving Berlin's *Easter Parade* is light and airy as a scrumptious soufflé featuring some of Irving Berlin's most beloved tunes. Irving Berlin's *Easter Parade* is a dazzling, fanciful experience that can be seen for the first time ever, at Chanhassen

www.chanhassentheatres.com Information on show times and tickets # 952-934-1525

2007 Statewide Fishing Openers

May 12Walleye, Sauger, Northern Pike

May 12 - Sept. 30 ..Lake Trout Summer Season

May 12 - Oct. 31.....Stream Trout Summer season

May 26Bass Opener

June 2Muskie Opener

More information: www.dnr.state.mn.us

Looking for a fishing hole - Check out the DNR **Lake Finder.** www.dnr.state.mn.us/lakefind/index

The Lake Finder contains data for more than 4,500 lakes and rivers throughout Minnesota, including: [lake surveys](#), [lake depth maps](#), [lake water quality data](#) and [lake water clarity data](#), [satellite-based water clarity information](#).



Gopher State One Call

Be Safe—before you dig to plant a tree, build anything or even put in a fence, call Gopher State One Call 651-454-0002 or visit them online at www.gopherstateonecall.org two business days before you dig to determine the location of underground utilities.



Fire Protection Service

The City of Woodland has a contract with the City of Wayzata for fire protection services. Residents are responsible for costs related to calls from their residence whether the call is a false alarm or actual fire.

Often, the fire alarm is canceled prior to the fire trucks arriving at your residence, or even leaving the station. The

Wayzata Fire Department pays the fire men and women for responding to all calls.

Woodland adopted a Resolution to fairly allocate a portion of the fire contract costs by assessing a charge to the property where the call originated, (false or real). The first call is \$250 per hour. The second call and all additional calls will be \$500 in the same year. The cost of Woodland's Fire Contract is based on the number of calls. The contract is adjusted annually. Most cities charge for the cost of emergency calls to the property where the call originated. Unpaid calls result in an additional fine and assessment to the property taxes.

Street Sweeping

The City has a contract for street sweeping service in April. We anticipate the streets to be swept during the week of April 23rd, weather permitting. We appreciate your patience while these slow moving vehicles are completing their work.

Recycling Schedule

April Recycling: 12 & 26

May Recycling: 10 & 24

June Recycling: 7 & 21

Council Meets on the 2nd Monday each month at 7:00PM.

April 9

May 14

June 11

City Hall Closed:

Friday, April 6—Good Friday

Monday, May 28—Memorial Day

Spring Cleaning

It is that time of year to clean out flower beds and gardens.

As a reminder, **mixing yard and tree waste with your trash is illegal in Minnesota.**

Please contact your garbage hauler to arrange separate collection of compost and yard materials.



LAKE MINNETONKA CONSERVATION DISTRICT (LMCD) AQUATIC INVASIVE SPECIES PROGRAM



The LMCD has adopted a three component approach to address Aquatic Invasive Species (AIS) for Lake Minnetonka in 2007. The components consist of: 1) Continuation of the MN DNR Public Access Inspection Program, 2) Implementation of Internet Landing Installed Device Sensor (I-LIDS), and 3) Creation of a Volunteer Inspection Program.

For purposes of this newsletter, efforts will lend towards informing you about the third component; **Creation of a Volunteer Inspection Program**. The Volunteer Inspection Program was created to supplement the MN DNR Watercraft Inspection Program by providing on-site inspections of the remaining seven secondary public accesses on Lake Minnetonka, during the same duration, days, and times as provided by the MN DNR at the four primary accesses. The secondary public accesses include: 1) Carsons Bay, 2) Wayzata Bay, 3) Echo Bay, 4) Halsted Drive, 5) Cooks Bay, 6) Lake Minnetonka Regional Park, and 7) Phelps Bay.

The LMCD is looking for volunteers for this program. Ideally, the Volunteer Inspection Program would cover the secondary accesses from May 18th through September 16th, on Fridays (11 a.m. to 7:00 p.m.) and Saturdays, Sundays, and holidays (9:00 a.m. to 5:00 p.m.). If you have interest in volunteering your time in 2007, please contact the **LMCD office at 952-745-0789**.

To compliment the AIS Program, House Representative John Berns (former LMCD Representative for the City of Wayzata) authored two Bills that would establish a Zebra Mussel Control Pilot Program; one for Lake Minnetonka and one for other high risk bodies of water; HF1235 and HF1236, respectively. Both Bills have been introduced at the State level, had their first reading, and were referred to the Environment and Natural Resources Committee. You may view the Bills on Representative Bern's website at www.house.mn/33b.