



WOODLAND NEWS

FALL 2011



Hennepin County has 1.2 million residents, approximately 22 percent of the population of Minnesota.

Approximately 44% of the county's budget goes for health and human services.

Approximately 41.5% of the county's annual budget is supported by property taxes.

2012 City Budget and Tax Levy

The Woodland City Council adopted its 2012 preliminary budget and property tax levy on September 12th. The 2012 General Fund expenditures budget increased \$16,557 (5.27%) from \$313,903 in 2011 to \$330,460 in 2012. This followed a 1% decrease in 2011 and a 1.2% decrease in 2010.

For next year, the principal contributing factors driving the increased spending are; election costs for 2012, increased budget for snow plowing and replacement costs of regulatory road signs. There was also a modest increase in contracted services, including; police, clerical, audit and assessing services.

The public is invited to attend and comment on the 2012 Budget at the annual Truth in Taxation meeting on Monday, December 12 at 7:00PM. The final 2012 Budget and Levy will be adopted at this meeting. The detailed preliminary budget is available for review on the City website.

INSIDE THIS ISSUE:

Buckthorn Removal 2

Recycling Schedule 2

House Check Form 3

Fire Dept. Open House 3

Stone Arch 4

Yard & Tree Waste Disposal 5

Household debris disposal 5



Revenue	2011 Budget	2012 Budget	% change from 2011 Budget	% of 2012 Revenue
Taxes	\$300,682	\$310,224	3%	93.88%
Licenses & Permits	\$5,250	\$9,075	73%	2.75%
Govt. Aid	\$2,771	\$4,161	50%	1.26%
Charges /Services	\$2,000	\$2,000	0%	0.61%
Fines & Forfeits	\$1,200	\$3,000	150%	0.91%
Interest & Misc	\$2,000	\$2,000	0%	0.61%
TOTAL	\$313,903	\$330,460	5%	100.00%
Expenses	2011 Budget	2012 Budget	% change from 2011 Budget	% of 2012 Expenses
Gen. Govt. / Elections	\$1,265	\$3,510	177%	0.40%
Clerk, Treasurer, Auditor, Assessor, Zoning, Engineer.	\$81,540	\$80,928	-1%	25.98%
Legal Service	\$12,000	\$10,000	-17%	3.82%
Police & Fire	\$124,487	\$126,296	1%	39.66%
Rd. work, snow plow, mowing, trees, septic insp.	\$73,771	\$88,761	20%	23.50%
Recycling, Insurance, deer control	\$20,840	\$20,965	1%	6.64%
TOTAL	\$313,903	\$330,460	5%	100.00%

Puzzles:

1. What instrument is used to measure wind speed
- 2) The Jay belongs to which bird family
- 3) Where was Glenn Miller flying to when his airplane went missing?
- 4) Which fish goes through these stages of growth: fry, parr, smolt, grilse, kelt?
- 5) Which mammal, closely related to the elephant, gave rise to the old mariners' tale of mermaids?

Answers on page 6

Recycling Schedule

Waste Management collects recycling bi-weekly in Woodland on Thursdays.

Have your cart out and available for the driver by 7:00 AM on the pick-up day.

PICK-UP DATES

- Thursday—Oct. 6**
- Thursday—Oct. 20**
- Thursday—Nov. 3**
- Thursday—Nov. 17**
- Thursday—Dec. 1**
- Thursday—Dec. 15**
- Thursday—Dec. 29**
- Thursday—Jan. 12**

No need to separate products—all of your recycling materials go into the green & gold cart on wheels.

Buckthorn Management

Fall is a Good Time For Buckthorn Management

Buckthorn is a non-native, invasive shrub originating in northern Eurasia. Because of its extreme invasiveness, all species of buckthorn have been banned from sales. It has also been placed on the Minnesota State Restricted Noxious Weed List. Although sales are prohibited, removal is not mandatory but is highly encouraged.

How to get rid of Buckthorn

Buckthorn should not be cut without having a method of killing the stumps. If the stumps are not killed, they will re-sprout vigorously and be even more difficult to eradicate. Stumps can be chemically or mechanically neutralized or removed.

Uprooting

Buckthorn uproots quite easily. A mechanical tool called a weed wrench can pull out shrubs up to 2.5 inches in diameter and 10 to 15 feet tall.

Chemical Treatment

Stumps can be chemically treated. The most common method is applying glyphosate at 25 % concentration to fresh cut stumps. Same day application is the most effective. This should only be done from late summer through fall and as long as temperatures are above 32 degrees. Glyphosate is an active ingredient in "Roundup" and other brand name chemicals. Glyphosate cannot be used near waterways. When treating stumps around water, "Rodeo" is recommended.

More information on Buckthorn, including a list of replacement plants, is available on the DNR web site, www.dnr.state.mn.us and enter "The Trouble With Backyard Buckthorn" in the search engine.

THANK YOU TO HERB SUERTH

Woodland resident Herb Suerth has served 17 years as a commission member on the Lake Minnetonka Conservation District, representing Woodland. Herb will step down from this role at the end of the year. We want to express our sincere thanks to Herb for his dedicated service on this important commission.

Herb has had an especially active role in milfoil management and aquatic invasive species control.

His expertise will be surely missed.

THANK YOU Herb!

Commission Member needed for the Lake Minnetonka Conservation District

Woodland is in need of a resident to represent Woodland on this commission.

The Lake Minnetonka Conservation District reviews permits and licenses, such as special events, multiple docks and charter boats. The LMCD considers lake management issues, and other issues such as Eurasian Water milfoil and Zebra mussels.

Meetings are at 7:00PM on the second and fourth Wednesdays of each month.

Interested residents should submit a letter of interest to the City of Woodland either by email, fax or mail.

For further information about this volunteer position, contact the city at 952-474-4755.

HOUSE CHECK PROGRAM

The Deephaven/Woodland Police Department is pleased to provide house checks. When you are on vacation or out of town for an extended period of time, the Police Department will do a security check on your residence. This service involves a periodic drive-by/and or walk around of your residence. Generally the service is provided by a curbside view from the officer. If the officer sees anything unusual they will investigate the residence and property. **This does not guarantee that your home or property will not be vandalized or violated; it is a reassurance program to better pinpoint a time of occurrence if your home is criminally violated.** If you would like a house check, please call the Deephaven Police Department at 952-474-7555.

Please sign and date the form, and return it to the Police Department. House checks will not begin until a signed form is received by the Police Department. The form need only be signed once. The signed form will be kept on file at the Police Department. Subsequent house check requests will not require another signed form.

Please take the necessary steps to ensure your home and property are secured. Here are some helpful tips to take before leaving town:

- Contact one or two trusted neighbors or family members and let them know what your itinerary will be and give them a phone number to each place you plan on staying. It would be helpful to leave a key, so your neighbor or family member can access your home in cases of emergency. If your house has an alarm, give the code to them so the alarm can be de-activated if it goes off.
- You should have the Post Office hold your mail or have your neighbor/family member pick it up daily.
- Stop newspaper delivery or have it picked up daily.
- Leave a light on inside the home. This can be accomplished either by plugging in a lamp (or two) into a timer.
- Make sure your neighbor/family member takes care of the garbage, usually for the first week you're gone.
- If you are going to be gone for several weeks it is a good idea to have someone take care of your lawn or remove snow.
- Lock your garage doors and do not leave the keys in the vehicles.
- Activate your alarm system if you have one.

HOMEOWNER NAME: _____

ADDRESS: _____

PHONE: _____

SIGNATURE: _____ DATE: _____

Disclaimer: I have read and understand the House Check Program provided by the Deephaven/Woodland Police Department.

Medicine Collection Event

Hennepin County is providing residents the opportunity to properly and safely dispose of their unwanted, unused and expired medicines.

- Saturday, September 24
10AM—2PM St. Louis Park
- Saturday, October 8
10AM—2PM Orono

For more information: 612-348-3777
www.hennepin.us

Fire Department Open House



Join our fire
fighter for the
annual Fire
Department
Open House

Fire Safety Day is
Monday, October 10,
4 - 7 pm. at the Fire Station in
Wayzata.
Everyone is Welcome!

Stay informed about City business by checking the City Website front page for monthly agendas and key highlights.

www.cityofwoodlandmn.org

UPDATING ZONING ORDINANCE

Over the next several months, the Council will be reviewing the Zoning Ordinances and consider amendments to the Ordinance criteria for variances. This will bring Woodland's Zoning Ordinances into compliance with the State's newly legislated variance language.

Hennepin County Drop off Sites

Residents may dispose of household hazardous waste (HHW) at either of Hennepin County's permanent HHW Drop-off facilities. Brooklyn Park—8100 Jefferson Hwy and Bloomington—1400 West 96th Street. There is no charge to drop off residential HHW.

The drop-off sites are open to any Hennepin County resident and only accept items from households. No hazardous waste or problem materials can be accepted from businesses, including home businesses and non-profit organizations.

Facilities are open Tuesdays, Thursdays and Fridays, 10 a.m. to 6 p.m.; Wednesdays, 10 a.m. to 8 p.m.; and Saturdays, 8 a.m. to 5 p.m. Facilities are closed Sundays, Mondays, Independence Day, Thanksgiving, Christmas Day and New Year's Day.

There are annual limits to the quantities of materials dropped off or picked up. For more information visit www.hennepin.us/dropoffs or call Hennepin County at 612.348.3777.

Household hazardous waste (HHW): free

Household hazardous waste includes such items as paint, stain, thinners, solvents, pesticides, herbicides, cleaners, gasoline, used oil, oil filters, aerosol cans, fire extinguishers, light bulbs (fluorescent, CFL and HID), thermostats, switches and thermometers containing mercury, rechargeable appliances and batteries.

Consumer electronics: free

Also accepted for no charge are consumer electronics (TV, radio, stereo, VCR, camcorder, telephone, computer, monitor, printer). No copiers or fax machines are accepted.

Household appliances: \$15

Households appliances (microwave, water heater, stove, freezer, washer, dryer, etc.) may be dropped off for a \$15 fee.

This is not a comprehensive list of everything accepted at the facilities—for more information visit www.hennepin.us or call 612.348.3777 (M–F, 8 a.m.–4:30 p.m.).

Historical Stone Arch Structure—Restored for future generations

The large Stone Arch located along Stone Arch Road in Woodland has been restored. This 100+ year old stone structure underwent a major restoration in August. A stone mason was hired to replace stones, repair cracks and seal the entire structure with a penetrating sealant to protect from water erosion.

The Cost of the restoration was \$7,800. The restoration was unbudgeted, however Council agreed the restoration was necessary to maintain the longevity of this historically significant structure for years to come.

John Dhamer, a City resident, and Boy Scout, will be creating a low maintenance perennial garden around the base of the Arch as his Eagle Scout project.

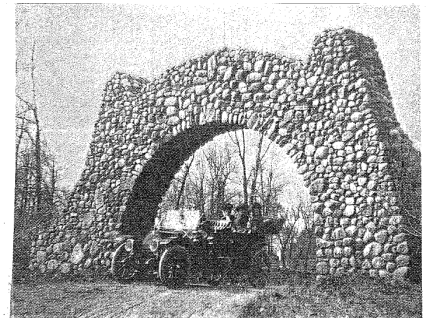
Donations are welcome

It is not too late to help with support of the Arch restoration.

The City is accepting donation to help off-set the costs of the restoration. If you would like to send a monetary donation to the City to be used towards the restoration costs, please make checks payable to the City of Woodland and mail to:

City of Woodland
20225 Cottagewood Road
Deephaven, MN 55391

Your donation is tax deductible



George Gillette entering his summer estate, ca. 1915



Present Day Photo of the Stone Arch 2011

How to Dispose of Yard and Tree Waste

Yard and tree waste includes brush, garden debris, grass clippings, leaves, plants (indoor and outdoor), compost, mulch and wood chips. It is illegal to put yard and tree waste in your household garage.

Disposal Options

Some yard waste materials can be picked up at the curb by your private waste hauler. Contact your private hauler to learn if this option is available to you.

Some Local Waste Haulers:

- Waste Management—952-860-1100
- Allied Waste—952-941-8394
- Randy's Sanitation—763-972-3335
- Vintage Waste—952-472-0401

Drop-off Options

The Mulch Store, 4275 Creekview Circle, Minnetrista 952-446-1056 - Call first for hours, special conditions, and fees. Directions: a half mile east of St. Bonifacious on the North side of State Hwy 7. (Next to Widmer Construction Co.)

How to Dispose of Household debris, furniture, carpeting, etc...

Household items in good condition can be donated to many local charities

Local garbage Haulers will also take large bulky items for an additional fee.

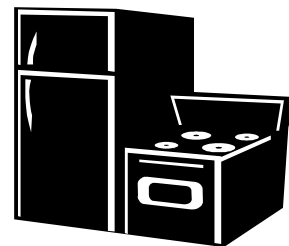
- Waste Management—952-860-1100
- Allied Waste—952-941-8394
- Randy's Sanitation—763-972-3335
- Vintage Waste—952-472-0401
- 1-800-GOT-JUNK - Household collection in the Twin Cities
Will Take:
 - [Appliance](#) , [Mattress](#) & [Furniture](#)
 - [Carpet](#), [TV](#) & [Computer & Printer Recycling](#)

Appliance Pick-up

JR's Advance Recyclers — # 651-454-9215

Appliance Drop off

Appliance Recycling Center of America ARCA
7400 Excelsior Blvd. (Across from Meadowbrook Golf course)
Minneapolis, MN 55426
Phone: (952) 930-9000 (water heaters and softeners not accepted)
M-F: 9AM-9PM ** Sat. 9AM-6PM ** Sun. Noon—6PM



Community Volunteer Opportunity

The ICA Food Shelf is the recipient of a 2-day "Bagging for Tips" fundraiser on November 22 and 23 (the two days before Thanksgiving). This is offered by Cub Foods, Minnetonka and is two of the busiest days of the year. Last year local area City Councils, civic leaders, rotaries, police and fire officials

participated from the 7-communities of Hopkins, Minnetonka, Shorewood, Excelsior, Greenwood, Woodland and Deephaven. Family members are welcome.

This event will help support the holiday food distribution to those most in need. Please con-

tact Shirley and sign up for a 2-hour shift to represent your organization.

Shirley Buehler
ICA Project Coordinator
952.279.0282
12990 St. Davids Road
Minnetonka, MN 55305
Shirley@icafoodshelf.org

**Woodland City Hall
Directory**

City Council

Mayor

Jim Doak

Council Members

**Mike Jilek Sliv Carlson
John Massie Chris Rich**

All contact information can be found on the City website:
www.cityofwoodlandmn.org

Questions or Concerns

City Hall: 952-474-4755 • **Police Dept:** 952-474-7555
(24 hour Police Dispatch # 763-525-6210)

Fire Dept: 952-404-5337
Wayzata Motor Vehicle/ License Bureau: 952-404-5320

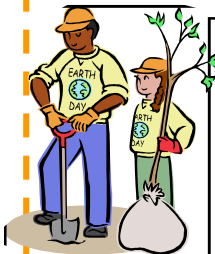
Public Meeting Schedules

City Council: October 10
 November 14
 December 12

Unless otherwise announced, all Council meetings are held at 7:00 p.m. at City Hall.

Call before you dig

State Law requires that you call 811 Gopher One Call, **651-454-0002** at least 2 days before you begin digging in your yard. Utilities will come out and mark the location of underground lines, including the location of pipelines, if present, at no cost to you.



Answer to Puzzles

1. An anemometer is used to measure wind speed. The first mechanical anemometer was invented in 1450 by Italian artist and architect Leon Battista Alberti.
2. Crow
3. Paris
4. The Salmon
5. A manatee, or sea cow



CenterPoint Energy - Gas Line Replacement

CenterPoint Energy will be replacing the existing gas line that runs along the north side of Breezy Point Road and along the east side of Maplewood Road and Maplewood Circle East.

TIMELINE: CenterPoint Energy began work on Monday, September 19, 2011.

DURATION: The replacement and restoration may take 4-5 weeks, weather permitting.

The gas line will be replaced along the entire route by horizontal boring under the road right of way. CenterPoint will need to dig some boring pits along the route to connect individual services and lateral lines. The roads will remain open to traffic during the gas line replacement.

If you have any questions, please contact Shelley at the City Hall 952-474-4755.



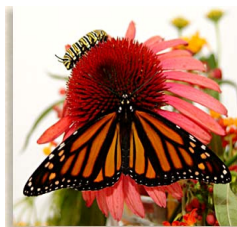
Sign Reflectivity Compliance Program

The Federal Government has mandated that all cities identify and establish a management method to maintain the nighttime reflectivity and street signs. Cities have until 2014 to develop an assessment method.

The Federal regulations also require cities to replace traffic signs when they are worn out that do not meet the minimum reflectivity standards.

Council Member Jilek and Council Member Rich have identified and located all the signs in Woodland and evaluated their condition. The City recently replaced several signs with new signs and removed several signs that were no longer needed.

The City will continue to manage the sign inventory and replace signs as needed. This program has resulted in increased costs to the City.



Each year the monarch butterfly begins a journey that will take them from the field and forest of the northern North American Continent to the southern reaches of this hemisphere in Central Mexico.

The 2,000 to 2500 mile journey to the Sierra Mountains of Mexico to fulfill their personal destiny guaranteeing a fertile and proposed coming year.

Monarch Butterflies have a short life span, up to five generations are produced each summer season. The last generation of Monarchs per-season will not reach complete maturity in late summer and as autumn arrives they are driven to migrate south for survival's sake along with most of the other winged friends of the air...the birds.